

E31...Heating Thermostat with LCD Screen.

INSTRUCTIONS

Heating thermostat with LCD screen, which has manual mode and energy saving mode. The thermostat is recommended for the control of electric heating device or on/off valve actuator in hydronic underfloor heating.

Selection Table:

Model	Current	Application
E31.113	3A	Built-in&floor sensor, floor limit sensor
E31.123	3A	Built-in&floor sensor, floor limit sensor, a potential-free output
E31.116	16A	Built-in&floor sensor, floor limit sensor

Parameter:

Voltage: 220V/230V

Power consumption: 2W

Setting range: 5~35°C (can adjust to 5-90°C)

External limitation: 5...60°C (factor setting 35°C)

Sensor: NTC internal/external sensor

Switch differential: 0.5-10°C adjustable
factory setting ±1°C

Ambient temperature: -5~50°C

Protective housing: IP20

Housing material: anti-flammable PC

User operation:

1) ON/OFF and Mode choosing

Slide the power switch to for energy saving mode, to for manual mode, to for Off.

2) Modify the temperature value

Press + key to increase the set value, and press - key to decrease, every step is 0.5°C.

Advanced setting

(qualified person preferred):

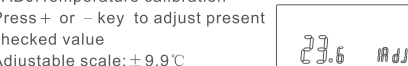
Usually finished at mounting thermostat.

Press + key simultaneously sliding the power on button to energy saving mode when in power off state.

➔ 1ADJ: Temperature calibration

Press + or - key to adjust present checked value

Adjustable scale: ±9.9°C



➔ 2SEN: Sensor mode

Press + or - key to choose sensor working mode

IN: built-in, OUT: floor sensor.

ALL: both sensors, floor sensor is the limit sensor



➔ 3LIT: Modify limitation value

Press + or - key to modify the temp. Limit value

Limitation range: 5~60°C



➔ 4DIF: switch differential setting

Press + or - key to change switch differential

Setting range: 0.5~10°C



➔ 5LTP: Start anti-frozen function

in power off state..

Press + or - key to change the present anti-frozen function



➔ 6RLE: Potential-free output and main power output in same/different way.

Press + or - key to change the present linkage state.

00: in same way,

01: in different way



➔ 7DLY: delay time of potential-free output

Press + or - key to change linkage delay time

Range: 0-5min.



➔ 8HIT: Max. Temperature setting

Press + or - key to change the Max. value

Range: 35-90°C



➔ 9FAC: Reset to factory setting

Press + key for 5 seconds till showing

Reset to factory setting



Attention:

Switch off After finish the advanced setting, the modified function will operate in re-open. Please modify setting carefully.

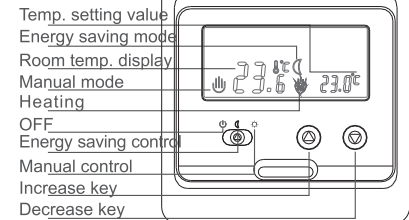
Sensor Failure

E0: Built-in sensor short-circuited or disconnected.
E1: External sensor short-circuited or disconnected.
When shows E0/E1 error, thermostat must be checked till the error is eliminated

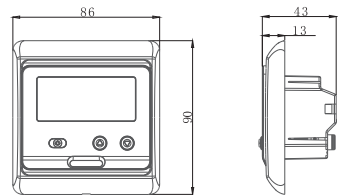
E31...Heating Thermostat with LCD Screen.

Display symbols

E31...

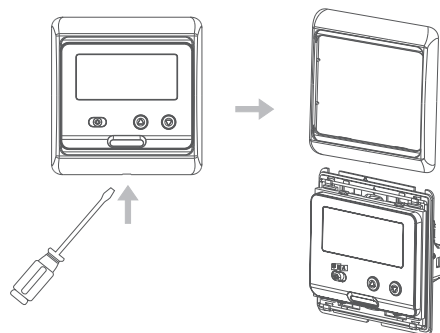


Dimension:mm

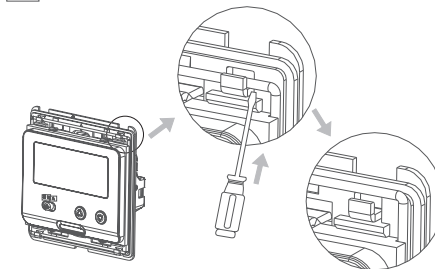


Mounting steps:

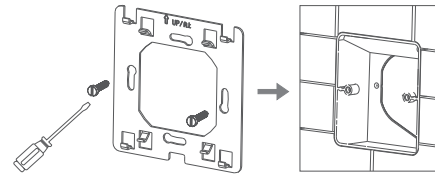
- 1 Release the front cover by inserting a screwdriver into bottom crack.



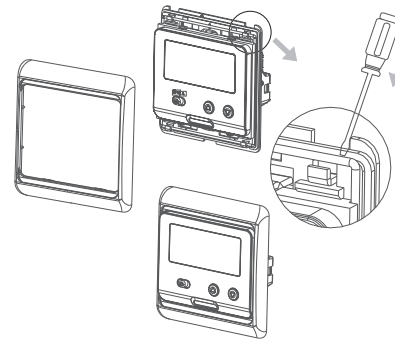
- 2 Take the backing plate apart according to the following diagram.



- 3 Mounted the backing plate in the wall socket by screwdriver.



- 4 After connect wires(see right diagram),the thermostat mount on the backing plate and remounted the cover and frame.



Connecting Diagram

Attention:

The thermostat which connect the electric heating device is apply to full load(3200W) heating cable in 2500m height above sea level,and the rated power of external load should be less than or equal to 80%rated powerthermostat when in the 2500m to 4200m height.

INSTRUCTIONS

